

A RESOURCE-FULL GUIDE

# at home

IN FAIRFIELD COUNTY

*a-list issue!*

**LIGHTING**  
**BLACK+GOLD**  
**PARTIES**  
**VINTAGE FINDS**  
**GOODS**



**A-LIST JUDGES:**  
**THE BEST ADVICE**  
**I EVER GOT**  
[ plus the cutest pictures ever! ]

\$5.95  
WINTER 2014/15  
WWW.ATHOMEFC.COM





# winner **Bath Design**

**ARCHITECT:**  
Charles Hilton  
Charles Hilton Architects  
Greenwich, 203-489-3800  
hiltonarchitects.com

**GENERAL CONTRACTOR:**  
Davenport Contracting  
Stamford, 203-344-9398

**INTERIOR DESIGNER:**  
Amy Andrews  
Katherine Cowdin Inc.  
Greenwich  
203-661-4844



The shower, tub, and sink are outfitted with Lefroy Brooks of London, sourced from Klaff's  
**opposite:** Decorative Venetian plaster on the octagonal ceiling was done by Heidi Holzer. The ottoman is finished in a Rogers & Goffigon terrycloth. Satin nickel sconces set above the vanities are Lona. The windows behind the tub are topped with a subtle valance treatment in a Lee Jofa fabric.

**CHARLES HILTON ARCHITECTS**

## *great escape*

**W**hen long-time clients of Charles Hilton Architects purchased their dream property on the water in Riverside, naturally, the house plans needed to capitalize on the beautiful views. This included a design for a serene master bath with his-and-hers vanities and plenty of windows looking out onto the Sound. To create a soothing space with great flow that would meet the homeowners' wish list, Hilton and his team planned a bathroom with an unusual octagonal shape. French doors lead into the space, and the back corners accommodate the shower and enclosed WC (both with windows), while the tub sits straight ahead, also backed by a large window. Custom vanities are set into the sides of the room, while smaller nooks house storage and shelving. All of the elements are tied together visually with elegant crown moldings and built-in paneling.

"The full octagon brings all of the pieces together in a compact and interesting plan," says Hilton.

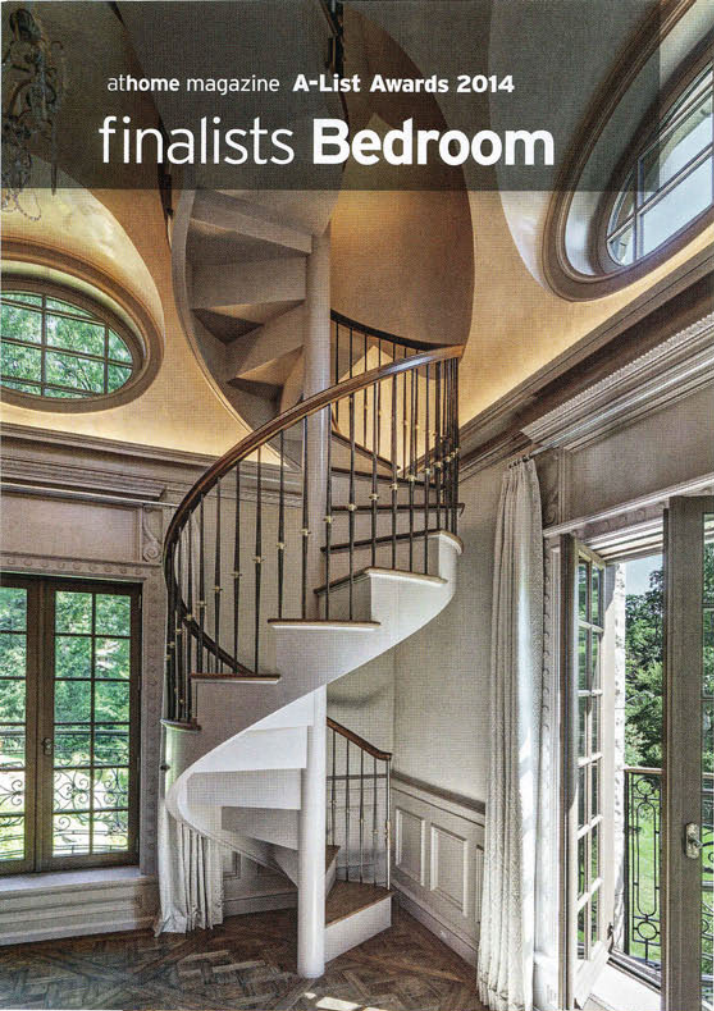
Hilton worked with interior designer Amy Andrews of Katherine Cowdin Inc. to select materials in a light, calming color palette. The floors, for instance, are finished in a half-inch mosaic of Calacatta marble. "You see the dappling of the light off the water," says Hilton, "We recreated that effect in the mosaic in the center of the space." Marble is repeated in backsplashes and in the shower space, which has a raised panel set into the stone. Cool features, such as a pivoting flat-screen TV, speakers, and a large, cushy ottoman encourage lounging. "After you work together awhile, you build up a level of trust," says Hilton of his client connection. "We can read the client and come up with ideas that are fun and special." -MKH







# finalists Bedroom



## Charles Hilton Architects

One of many standout spaces in a new residence of stately proportions, this elegant master bedroom features exquisite details that harken back to the eighteenth-century cabinets of the French aristocracy. A handcrafted spiral stair, which architect Chuck Hilton calls “a graceful corkscrew,” leads to a private study, furnished with a delicate lady’s desk and other period-appropriate pieces, fine millwork, and a sparkling pendant that illuminates the room with dappled light.

Hilton placed the master suite on the top floor of the three-story home, in a grand tower space that complements the Norman design.

“My clients came up with the idea for a tower, and this room is well-suited to its important placement,” says Chuck. The architect lavished the generously scaled bedroom space, which is sixteen feet square and has fifteen-foot ceilings, with a beautiful cornice and a cove ceiling, punctuated with elliptical windows that flood the interior with natural light. The Versailles-patterned floors and beautifully crafted furnishings complete an overall effect of serene luxury. —JO

**ARCHITECT:**  
Charles Hilton,  
Charles Hilton Architects  
Greenwich, 203-489-3800  
hiltonarchitects.com

**GENERAL CONTRACTOR:**  
Home Construction, LLC  
New Canaan, 203-594-7663

**INTERIOR DECORATOR:**  
Isabelle Vanneck  
Davenport North  
Greenwich  
203-629-9181





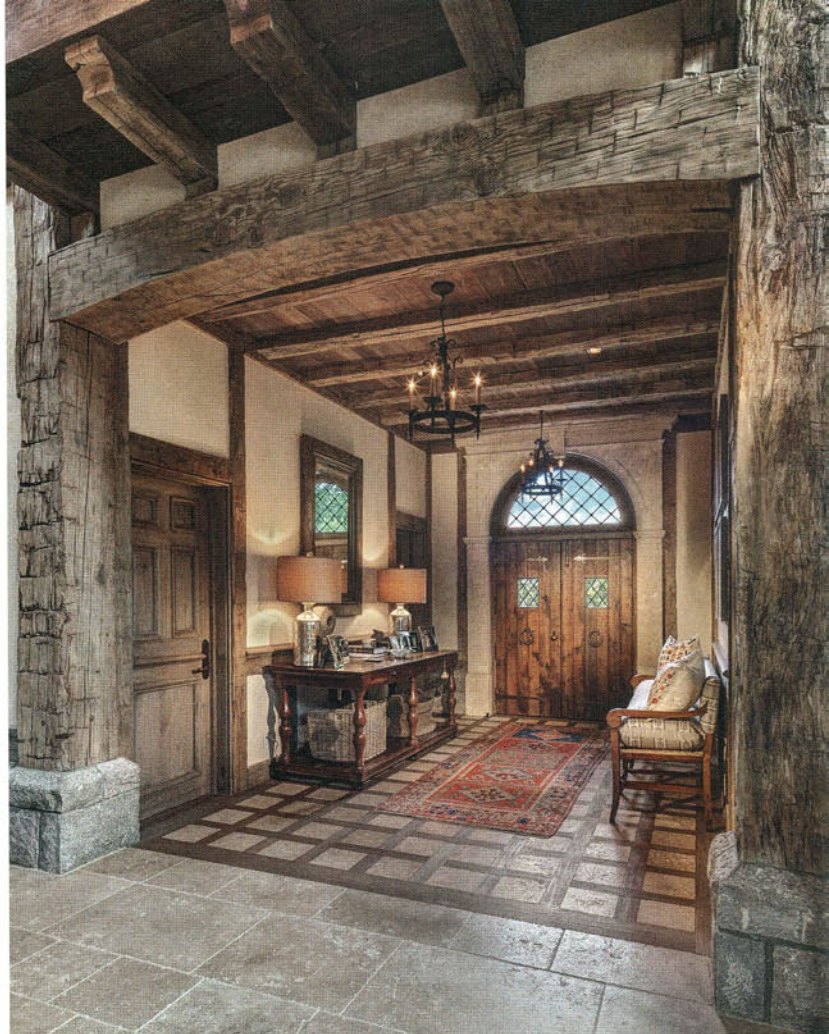
# finalists Entryways

## Charles Hilton Architects

The massive structure of a new Norman French-style residence, inspired by the Hameau de la Reine, Marie Antoinette's rustic retreat at Versailles, requires an equally impressive arrival space. Architect Chuck Hilton collaborated with decorator Isabelle Vanneck to create an appropriate entrée to the two-and-a-half-story great room that is the centerpiece of the home's common spaces.

Solid oak front doors, topped with a period-appropriate arched transom of diamond-paned leaded glass, balance the space's large-scaled elements. To anchor and define this greeting area, its floor is crafted of limestone with basketweave framing, differentiating the entry from the large limestone tiles that pave the breathtaking central room.

"With the entry's thirteen-foot ceilings, we were somewhat concerned about acoustics," says Hilton. Turns out, there's a solution for that. The porous French plaster applied between the walls' timber posts acts as a sound buffer—so conversation is comfortable and echo-free in this voluminous space. -JO



**ARCHITECT:**  
Charles Hilton Architects  
Greenwich  
203-489-3800  
hiltonarchitects.com

**GENERAL CONTRACTOR:**  
Home Construction, LLC  
New Canaan  
203-594-7663

**INTERIOR DESIGNER:**  
Isabelle Vanneck  
Davenport North  
Greenwich  
203-629-9181



# finalists **Traditional Architecture:** Less than 7,000 square feet



## Charles Hilton Architects

**D**istinct from the Georgians and Colonial-style homes that dot the pastoral roads of Greenwich, this house speaks of France, and more specifically, Normandy. Its owners, already in possession of their own Georgian residence, asked architect Chuck Hilton to design the new house when a beautiful piece of adjacent property became available; the increased acreage gave them an opportunity to expand their already park-like landscape and build something different.

The structure's unique character is reflected in exterior walls of half-timbering, infilled with terra-cotta brick; a steeply pitched slate roof and distinctive four-sided tower complete its profile. Inside, dramatic spaces with grand proportions—including a two-and-a-half-story great room with double height windows and a walk-in fireplace of Camargue limestone, give the home a memorable presence.

Hilton enjoyed the challenge of creating a design with historical forebears of a different lineage than is commonly seen in Fairfield County. To furnish the residence with the drama and scale suited to its style, Isabelle Vanneck lent her practiced decorator's hand to the large interior rooms and their luxurious fittings. —JO



**ARCHITECT:**  
Charles Hilton  
Charles Hilton Architects  
Greenwich, 203-489-3800  
hiltonarchitects.com

**GENERAL CONTRACTOR:**  
Home Construction, LLC  
New Canaan, 203-594-7663

**INTERIOR DECORATOR:**  
Isabelle Vanneck  
Davenport North  
Greenwich, 203-629-9181

**LANDSCAPE ARCHITECT:**  
Charles J. Stick, Inc.  
Charlottesville, VA, 434-296-1628



# A-List Awards

THE PALACE THEATRE, STAMFORD



The 2014 A-List winners pose with our panel of judges post-awards show.

**L'ANTIQUAIRE**  
*Distinctive Vintage, Antique & Contemporary Designs from Europe*  
Biedermeier • French Art Deco • Italian Design  
Lighting • Furnishings • Objets

18 Post Road West, Westport, CT • 203.454.2750 • [lantiquairewestport.1stdibs.com](http://lantiquairewestport.1stdibs.com) • Tuesday-Saturday



# A-List Awards

THE PALACE THEATRE, STAMFORD



PHOTOGRAPHS 1, 6, 7 BY KRISTIN HYNES; ALL OTHERS BY MELANI LUST



## athome

IN FAIRFIELD COUNTY

### STATEMENT OF OWNERSHIP MANAGEMENT AND CIRCULATION AS OF OCTOBER 2014

AT HOME IN FAIRFIELD COUNTY Magazine is owned and published by Moffly Media, Inc., 205 Main Street, Westport, CT 06880. Sole stockholder is Jonathan W. Moffly, President. AT HOME IN FAIRFIELD COUNTY Magazine is published five times a year with an annual subscription price of \$19.95.

	12 Month Average	Actual Sept./Oct. 2014
<b>2013-2014</b>		
Total copies printed	22,202	21,881
Newsstand/Bulk orders	1,634	2,000
Mail Subscriptions Out County	3,161	3,551
Mail Subscriptions In County	6,181	6,943
Total Paid/Requested	10,976	12,494
Free Mail Distribution	5,643	5,646
Free Delivered	2,170	2,391
Total Free Distribution	7,813	8,037
Copies not Distributed	3,413	1,350
Percent Paid	58.4	60.9